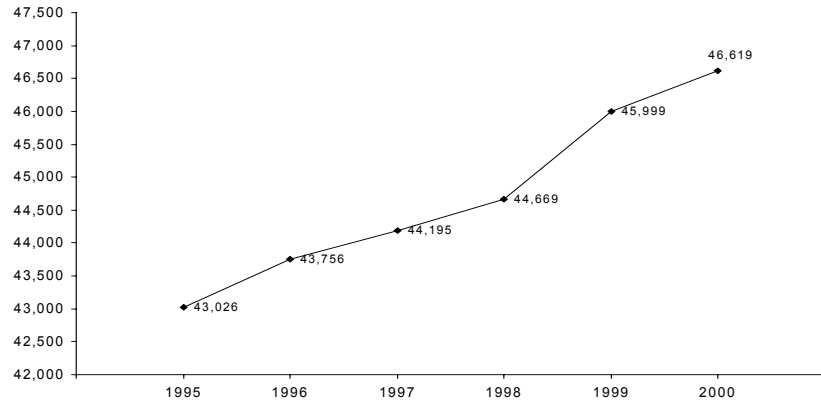
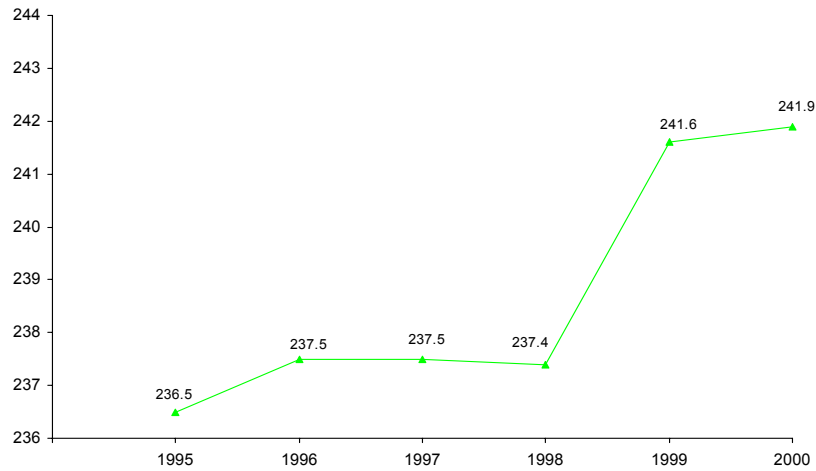


Figure 1: Employed clinicians, Australia 1995-2000



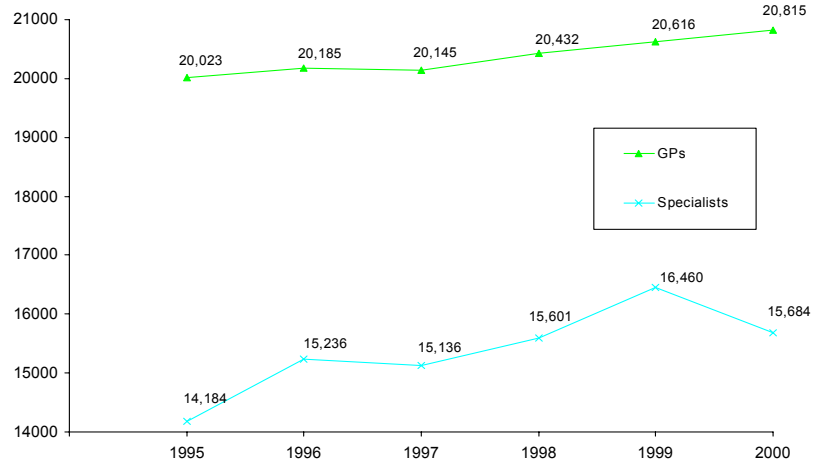
Source: AIHW Medical Labour Force Survey

Figure 2: Employed clinicians, per 100,000 population, Australia, 1995-2000



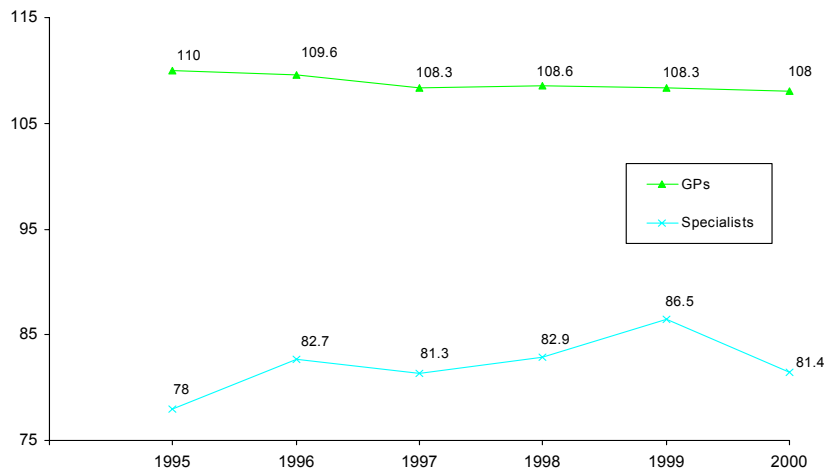
Source: AIHW Medical Labour Force Survey

Figure 3: General practitioners and specialists, Australia, 1995-2000



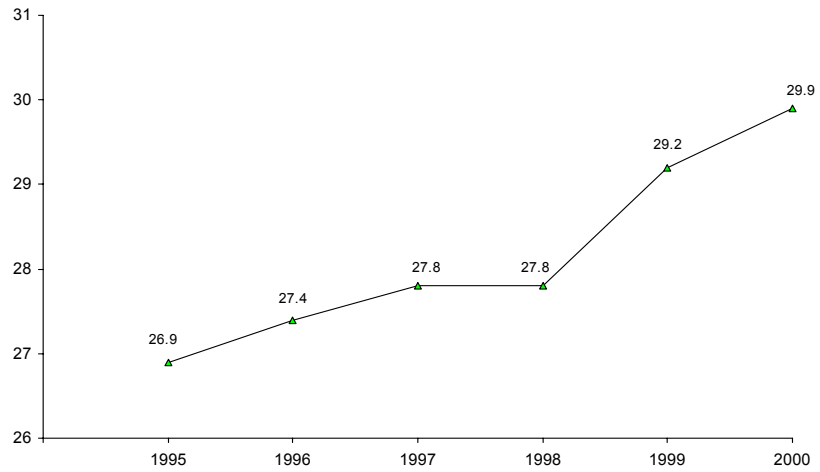
Source: AIHW Medical Labour Force Survey

Figure 4: General practitioners and specialists, per 100,000 population, Australia, 1995-2000



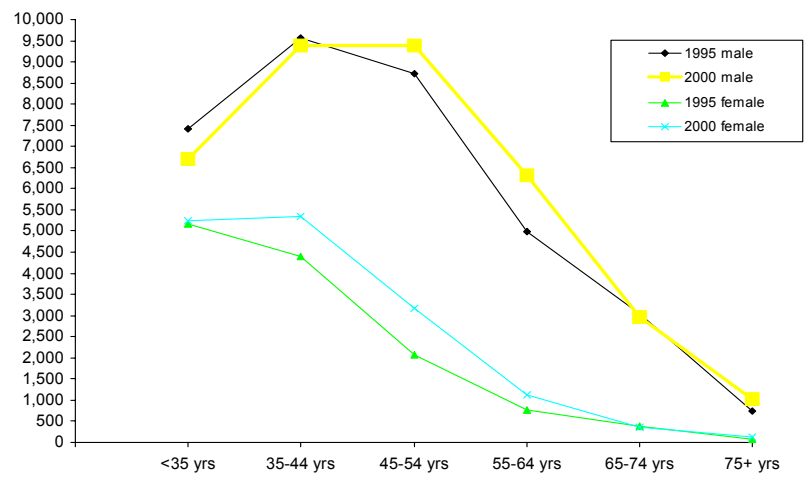
Source: AIHW Medical Labour Force Survey

Figure 5: Clinicians, % female, Australia, 1995-2000



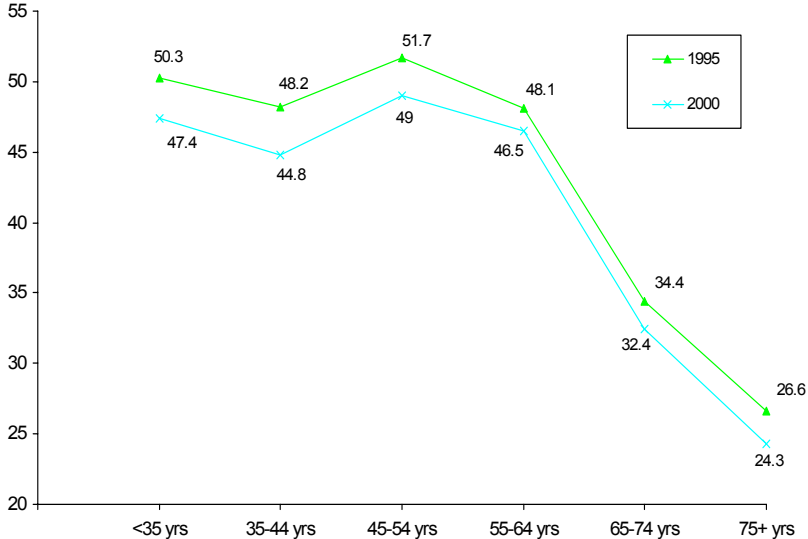
Source: AIHW Medical Labour Force Survey

Figure 6: Clinicians, by age and gender, Australia, 1995 and 2000



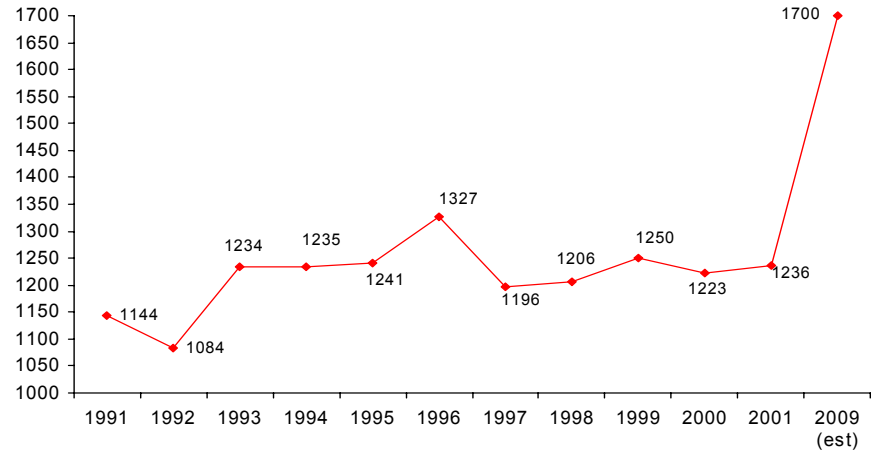
Source: AIHW Medical Labour Force Survey

Figure 7: Clinicians, average hours worked, by age, Australia, 1995-2000



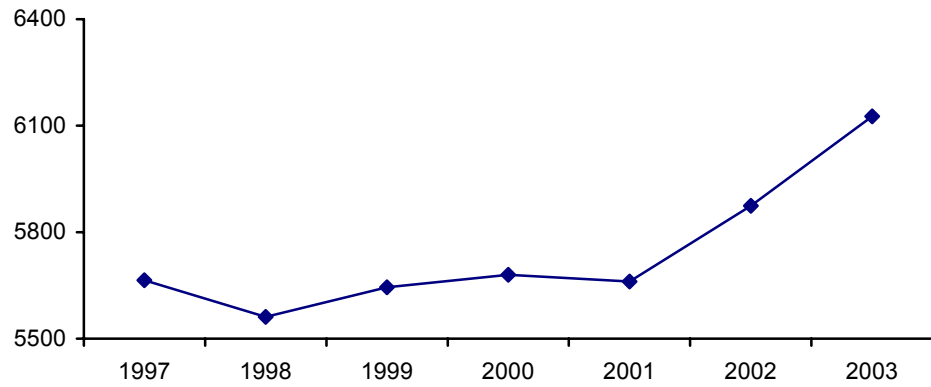
Source: AIHW Medical Labour Force Survey

Figure 8: University medical school completions, Australian citizens and permanent residents, 1991-2001 and 2009 (estimate)



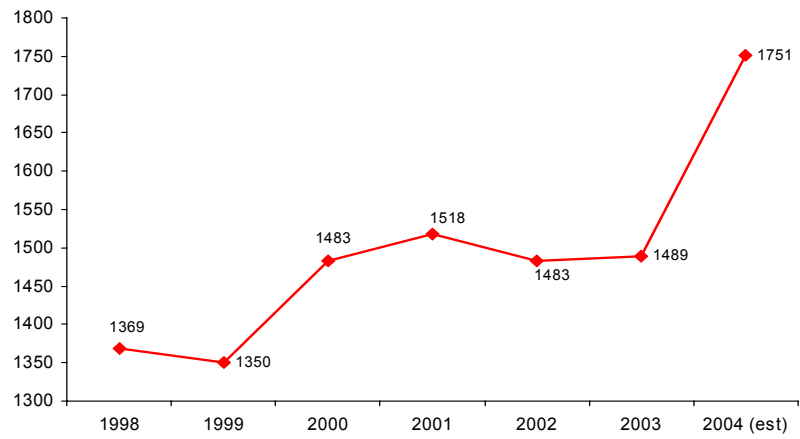
Source: AIHW, DEST, Australian Medical Schools

Figure 9: Vocational training positions/trainees, Australia, 1997-2003



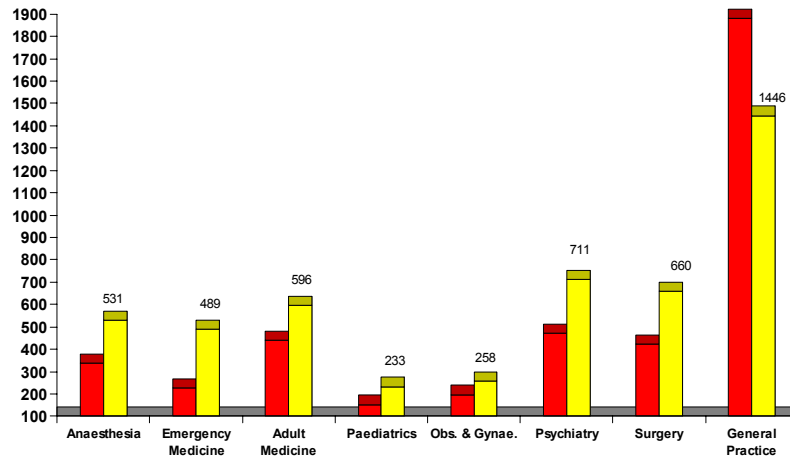
Source: AMWAC, medical colleges, GPET and GPEA

Figure 10: 1st year vocational training placements, Australia, 1998-2004



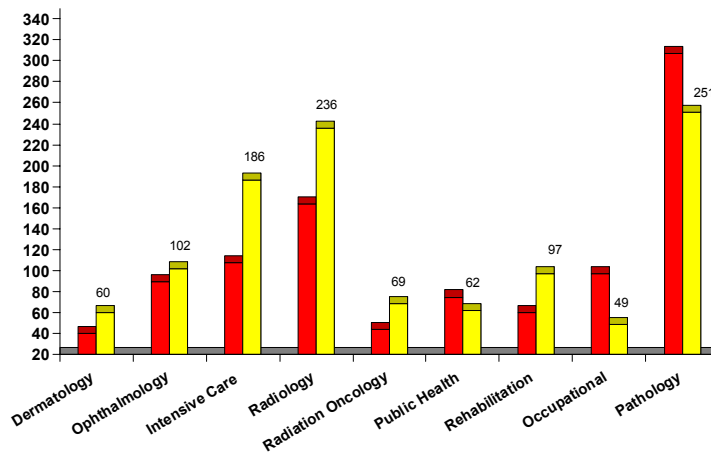
Source: AMWAC and Medical Colleges from MTRP Annual Reports

Figure 11: Vocational trainees, by training program, Australia, 1994 and 2003



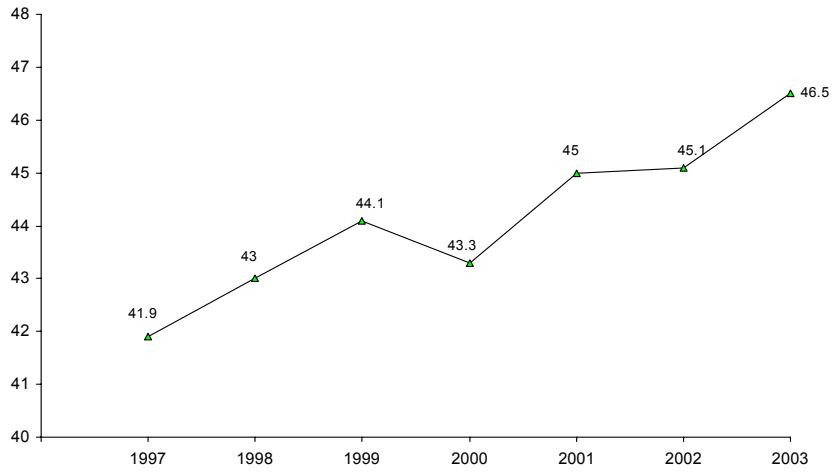
Source: 1994 (MWDRC), 2003 (AMWAC & MTRP)

Figure 12: Vocational trainees, by training program, Australia, 1994 and 2003 (continued)



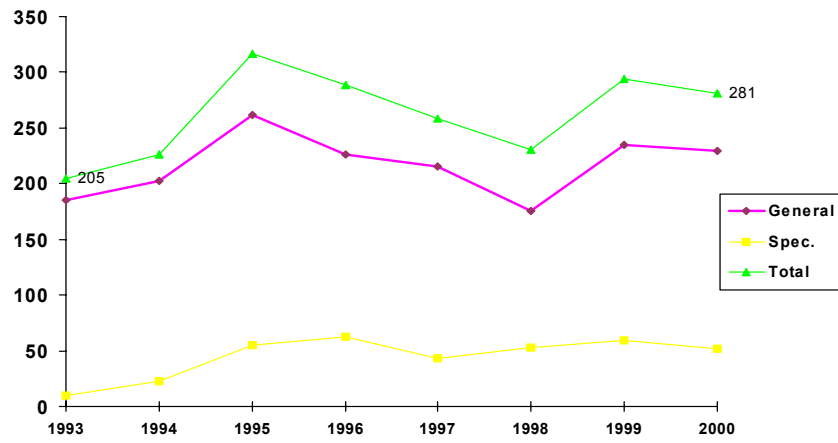
Source: 1994 (MWDRC), 2003 (AMWAC & MTRP)

Figure 13: Vocational trainees, % female, Australia, 1997-2003



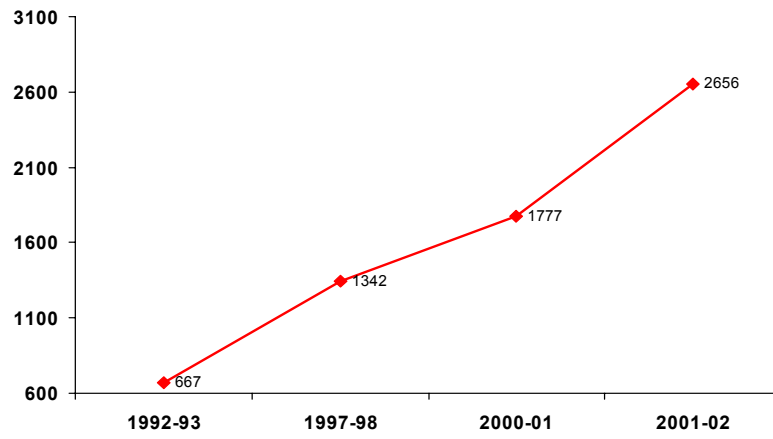
Source: AIHW Medical Labour Force Survey

Figure 14: Australian Medical Council passes, 1993-2000



Source: AMC

**Figure 15: Temporary resident doctor arrivals, Australia, 1992-2002
(area of need and occupational trainee stock as at 30 June)**



Source: AMWAC & DIMIA