

Assoc Prof Richard Murray
Dean
School of Medicine
Townsville Australia



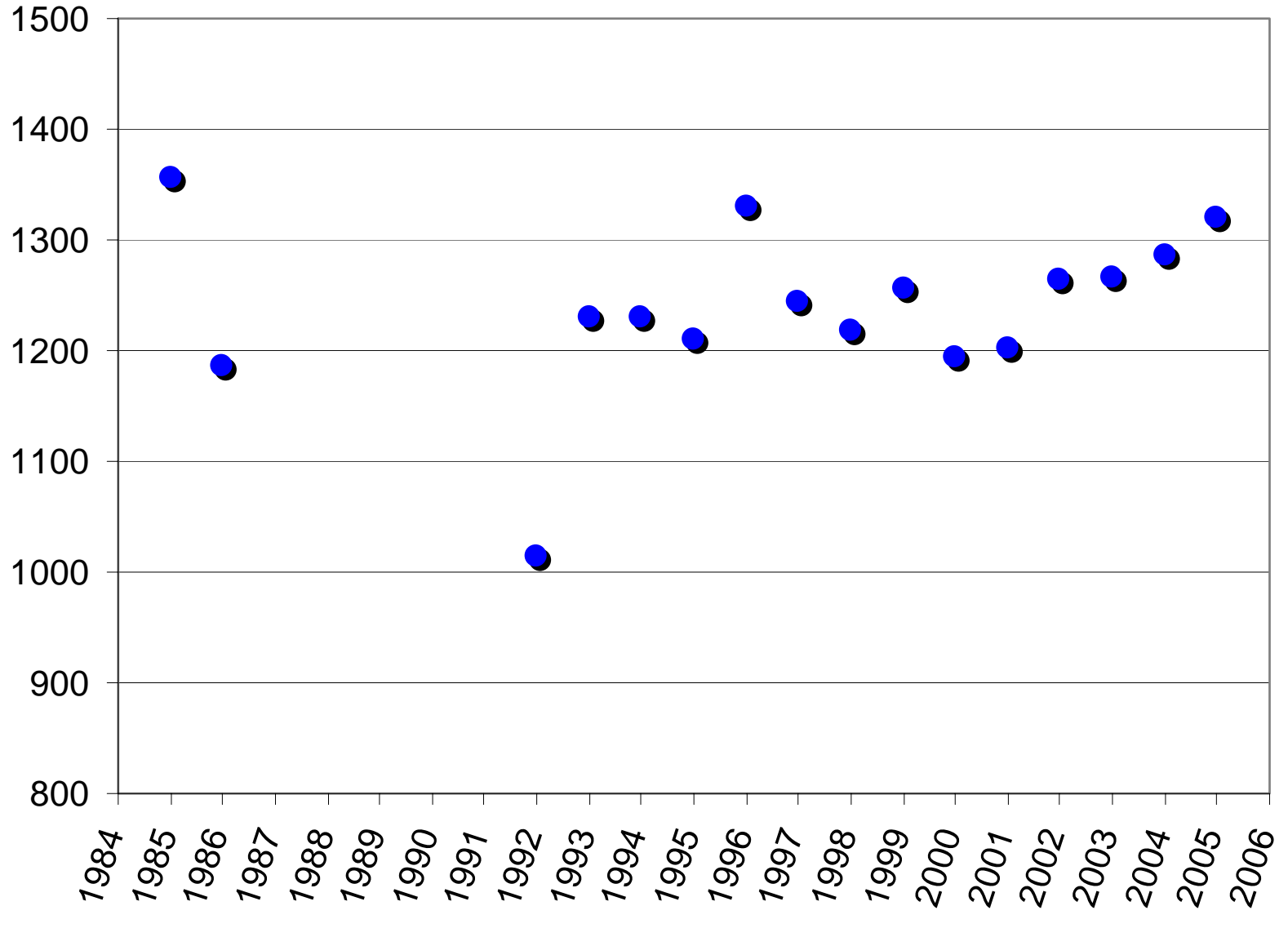
Medical education in Australia: trends and issues



- New title for representative forum for Australian (and now New Zealand) medical school Deans
- Objectives :
 - uphold quality standards
 - share innovation
 - encourage medical students to reach for the highest personal and professional standards;
 - pursue national issues in medical education and research
 - promote understanding of the role medical education in the community
 - foster communication and relationships

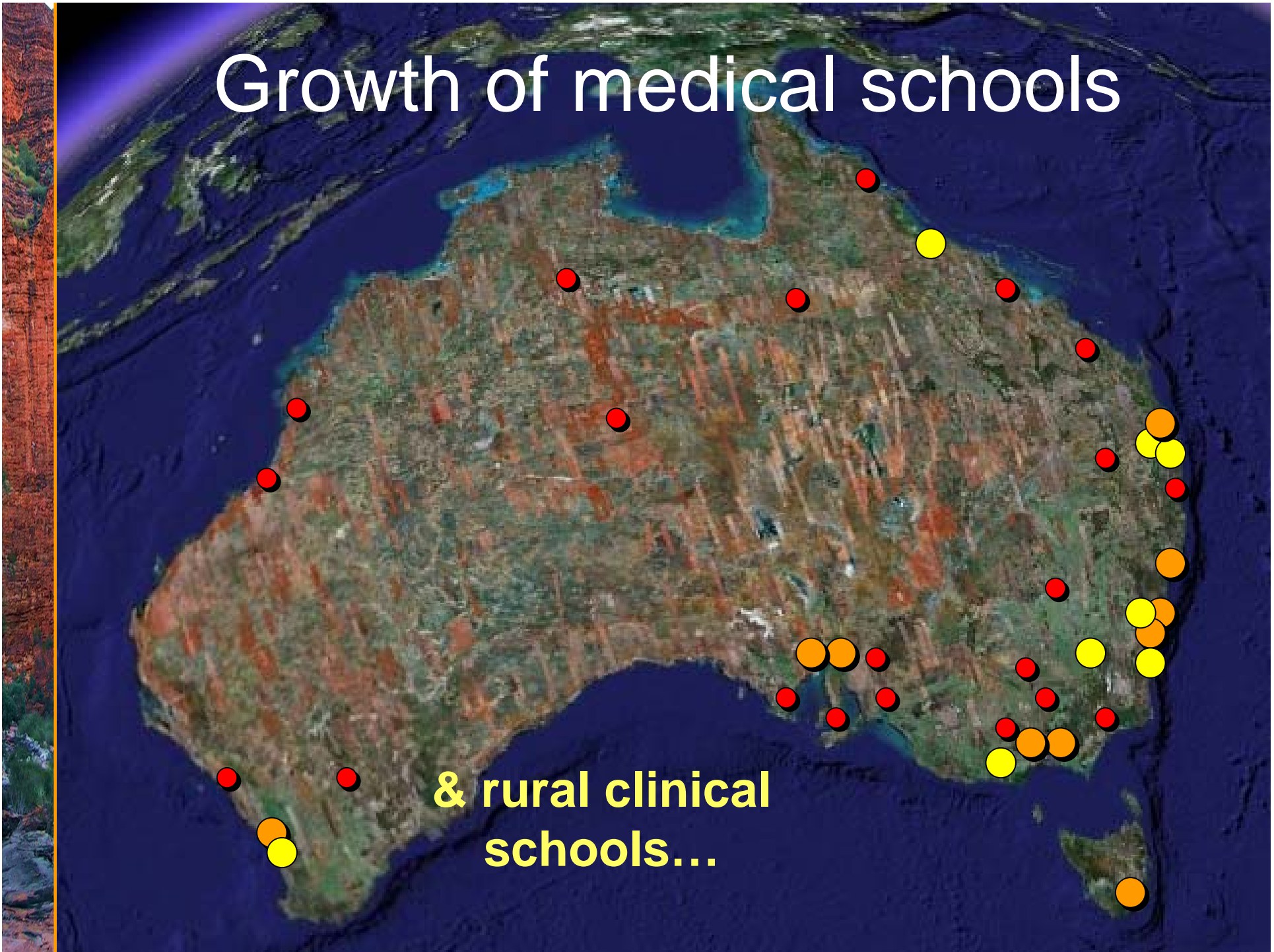


Medical graduations - 1985-2006



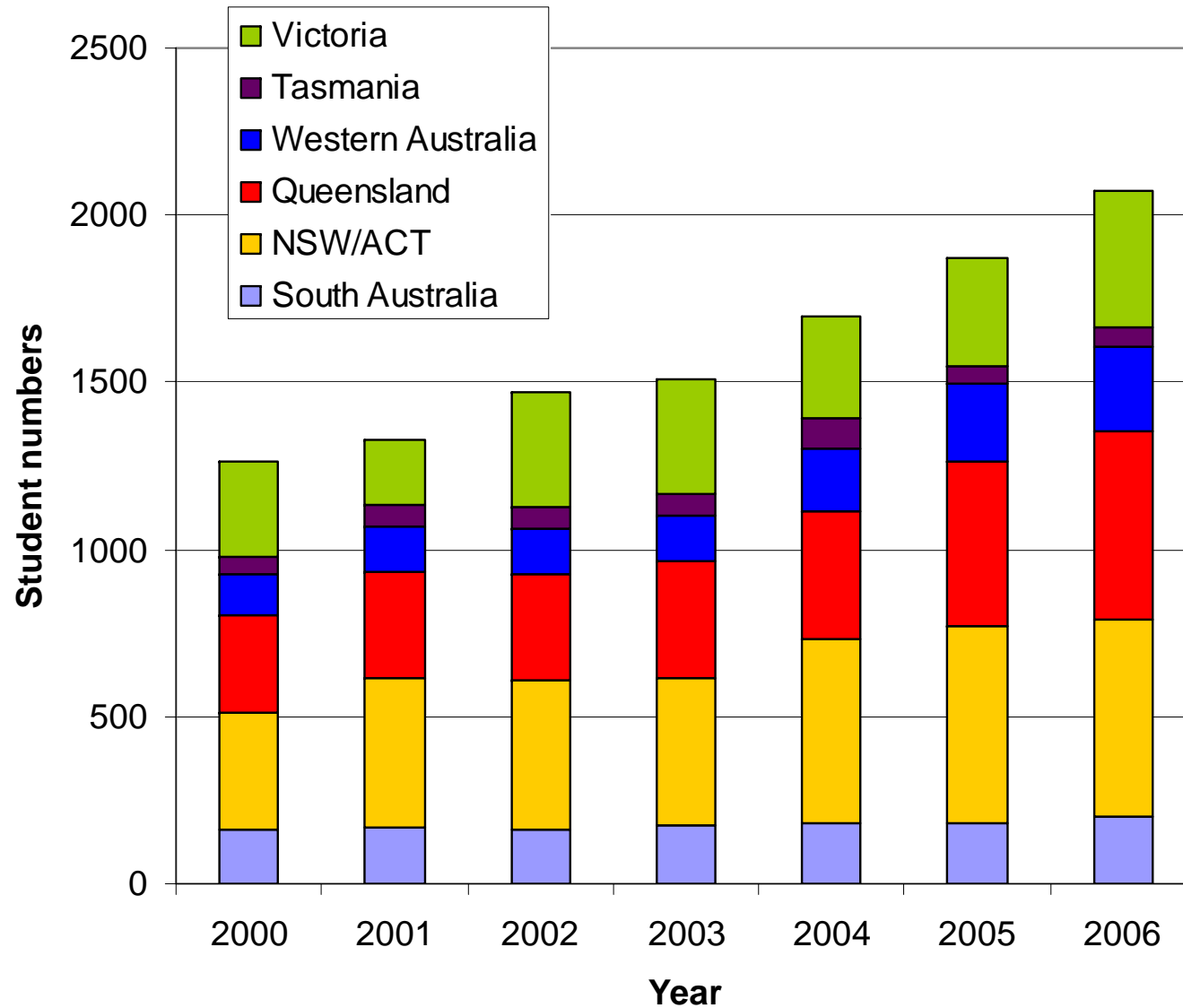
Growth of medical schools

& rural clinical schools...



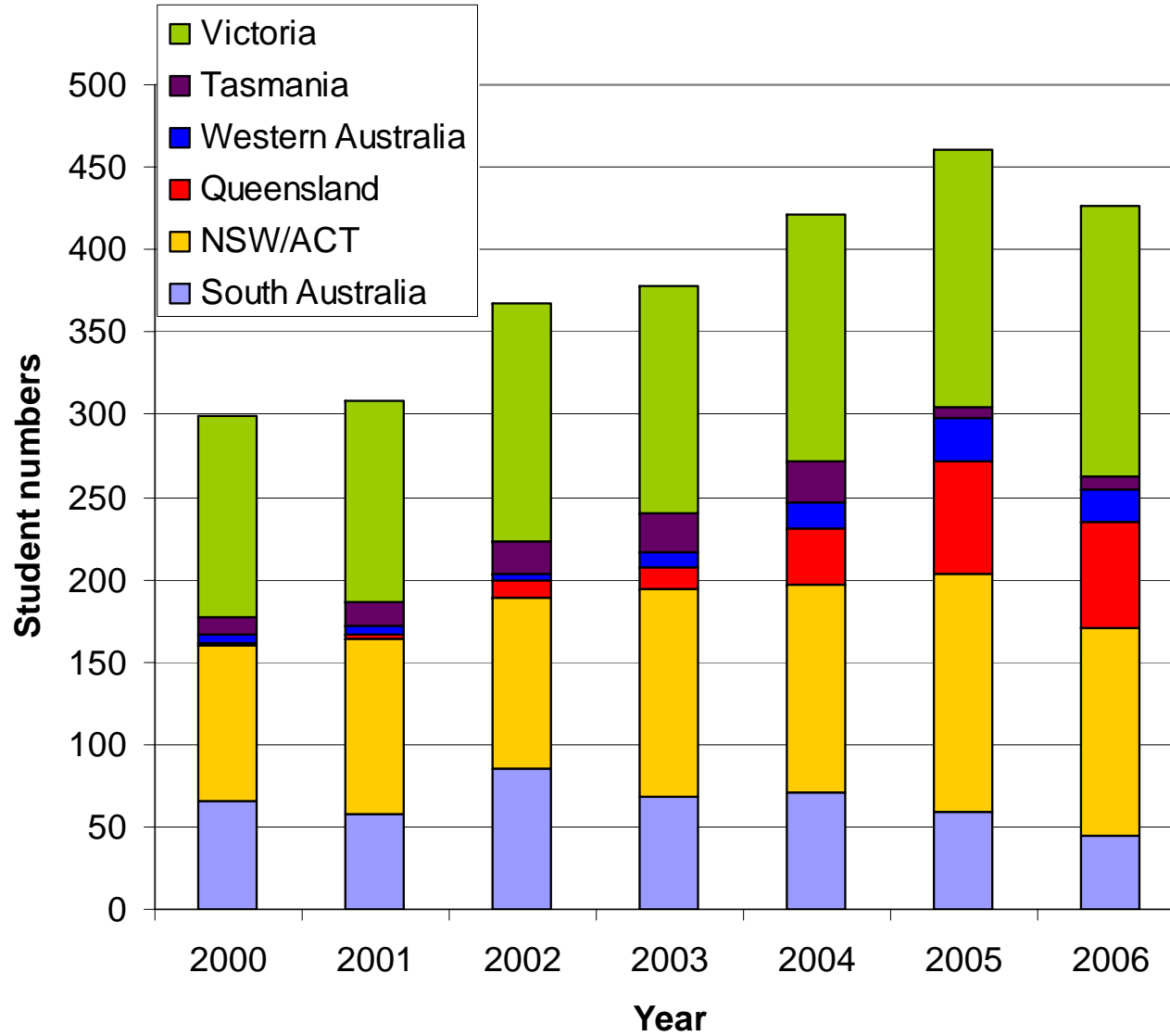


Domestic student intake into Australian medical programs



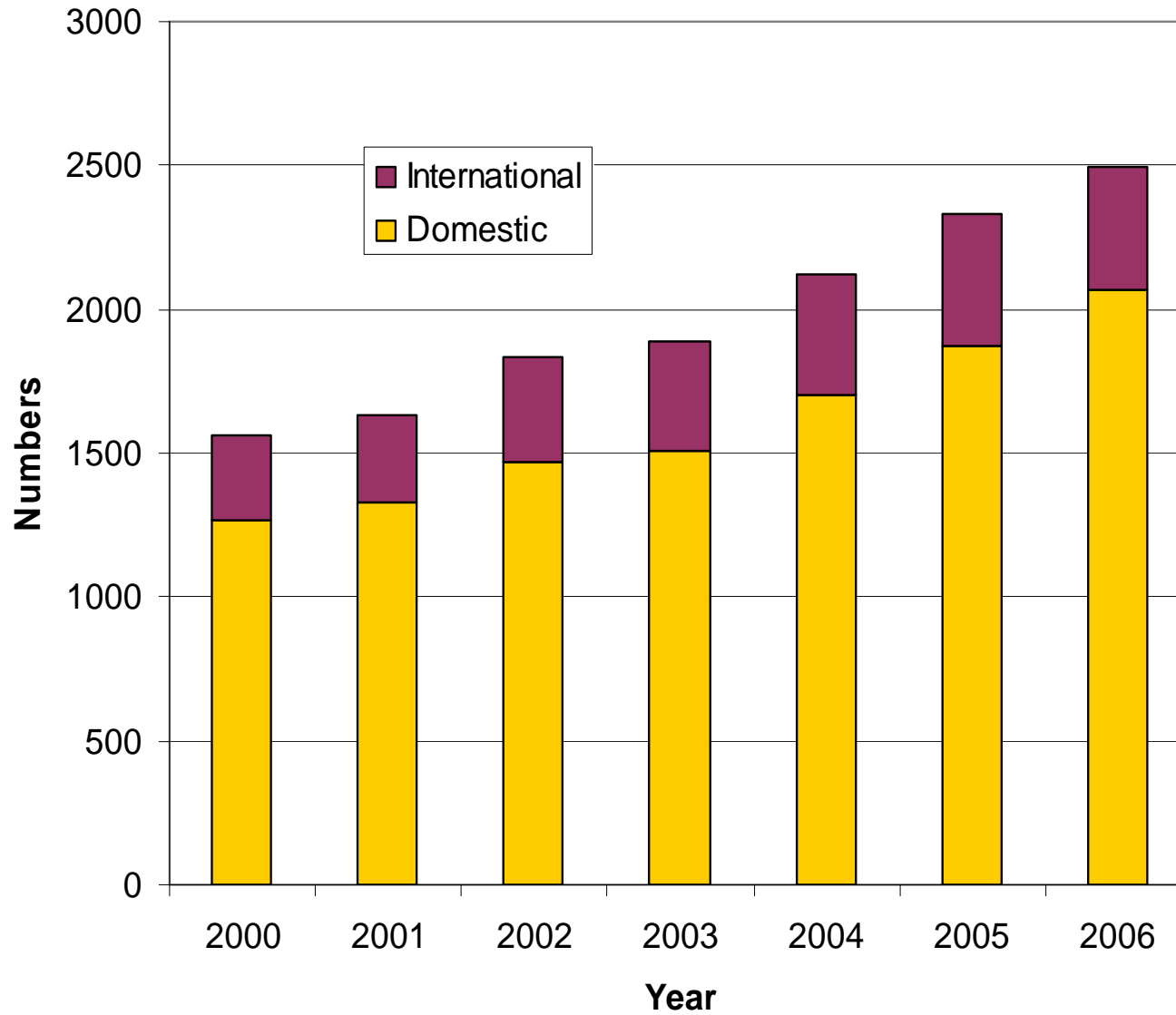


Fee-paying international student intake into Australian medical programs





Total first year medical school intake



Issues (education)

- Undergraduate vs graduate programs
- Curriculum pressures with shorter courses
- Clinical teaching capacity - a rate-limiting step
- Changing character of tertiary public teaching hospitals (quicker, sicker)
- Subsidised private insurance & greater use of private hospital system (no historical teaching role)
- Greater emphasis on community-based teaching & 'teaching health system' not 'teaching hospital'
- 'Rural pipeline' – recruitment, curriculum, delivery, relationship
- Research Quality Framework and potential tier of 'teaching only' medical schools

Issues (resources)

- Federal vs state government funding of clinical education roles of health system
- Physical infrastructure in regions and community sector (consulting rooms, tutorial space, student accommodation)
- Clarification of role of Health Department vs Education and Training Department.
- Tight funding environment for universities generally (pressure on medical school budgets)
- Pressures from increasing fee-paying international (& domestic) students to generate income
- Affordability of physician leaders for teaching

