

Student doctor's views of their training

General
Medical
Council

Regulating doctors
Ensuring good medical practice

General Medical Council

- The GMC registers all doctors to practise medicine in the UK.
- Their purpose is to protect, promote and maintain the health and safety of the public by ensuring proper standards in the practice of medicine.
- The GMC has not role in workforce policy

GMC: Education & Standards Directorate

- Undertake visits to:
 - Medical Schools – UK & Worldwide
 - Postgraduate Deaneries
 - Local Education Providers – training location
- As a part of ensuring standards, for the past six years the GMC have surveyed doctors in postgraduate training across the UK to find out what they think about the quality of their training.

Survey Objectives

- The survey gives a snapshot of the quality of medical education and training at a national level.
- This provides evidence for Visits team and Postgraduate deaneries to raise and address any education and training issues.
- The survey also generates a unique dataset of the training pathway and progression of UK trainees.

Survey Method

- Web based survey of all doctors in postgraduate training
- Survey asks:
 - 54 questions to all trainees
 - Separate specialty specific questions – developed by the respective Medical Royal Colleges
 - Allows trainees to raise patient safety concerns

Survey Method

- Responses to the questions are “merged” into 15 indicators:
 - Overall Satisfaction
 - Clinical Supervision
 - Handover
 - Induction
 - Undermining
 - Adequate Experience
 - Work load
 - Educational Supervision
 - Access to Educational Resources
 - Feedback
 - Local Teaching
 - Regional Teaching
 - Study Leave.

Survey Timescales

Validation of training location	Jan - Feb
Validation of trainees	Feb - Mar
Survey open	Mar to May
Internal review of results	May
Publication	June

Survey Results

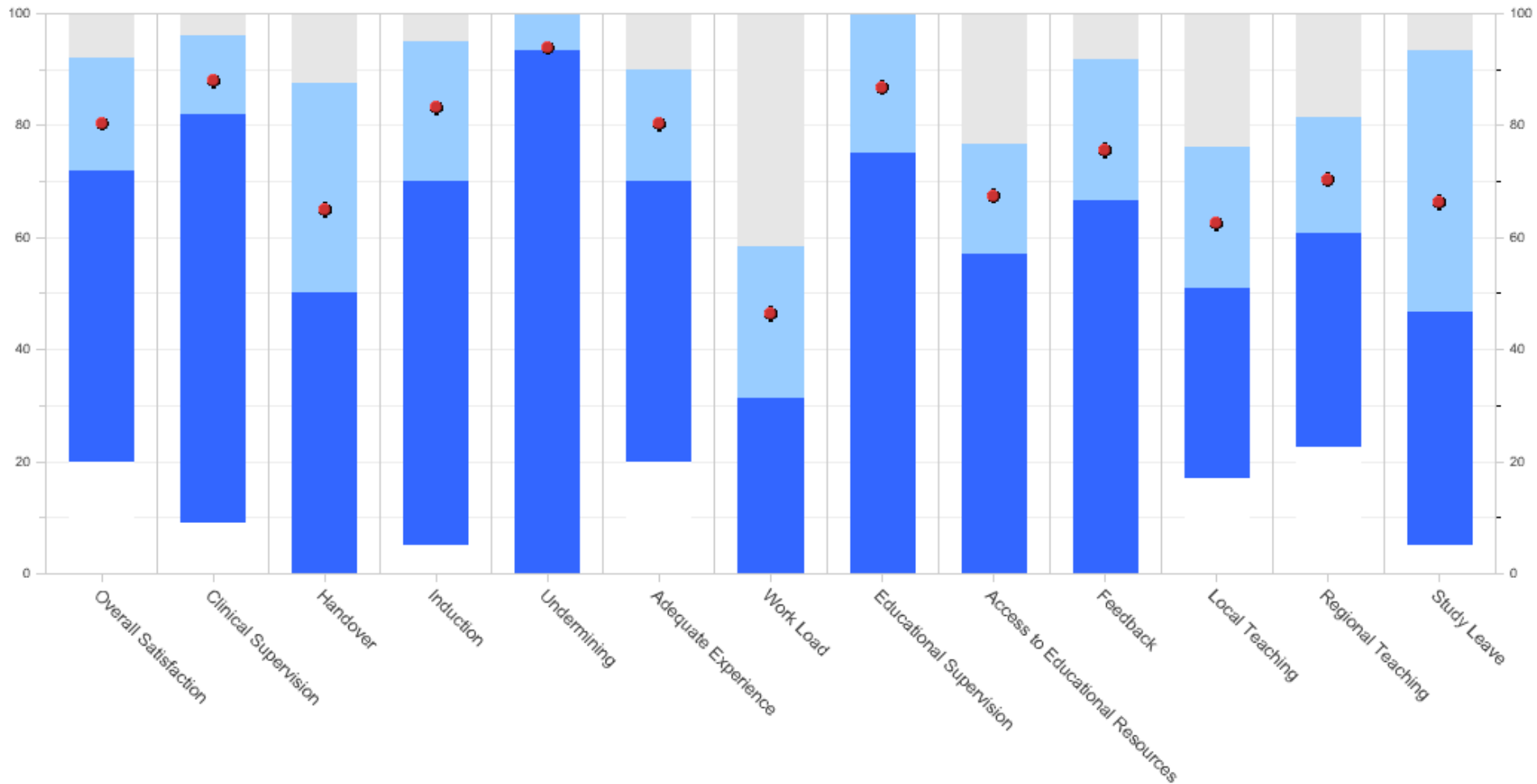
- Publically available web based tool to review indicators and outliers by:
 - Country
 - Deanery
 - Trust/Board
 - Site
 - Specialty.

See:

http://www.gmc-uk.org/education/national_summary_reports.asp

NOTE: Results tool being updated for 2013 results and will not be available in mid-May

Survey Results - Indicators



Survey Results - Outliers



[User guide](#)

Programme Group **Trust / Board** **Outcome** **Year**

Additional Reports

[All results by programme group by trust/board](#)

[Programme group by site](#)

Programme group by trust/board outlier summary

[Help with this report](#)

[Legend](#)

Report By is equal to Programme Group by Trust/Board
 and Survey Year is equal to 2012
 and Programme Group is equal to CMT, CST, Emergency medicine, General surgery
 and Trust / Board is equal to St George's Healthcare NHS Trust
 and N > 2 [View](#)

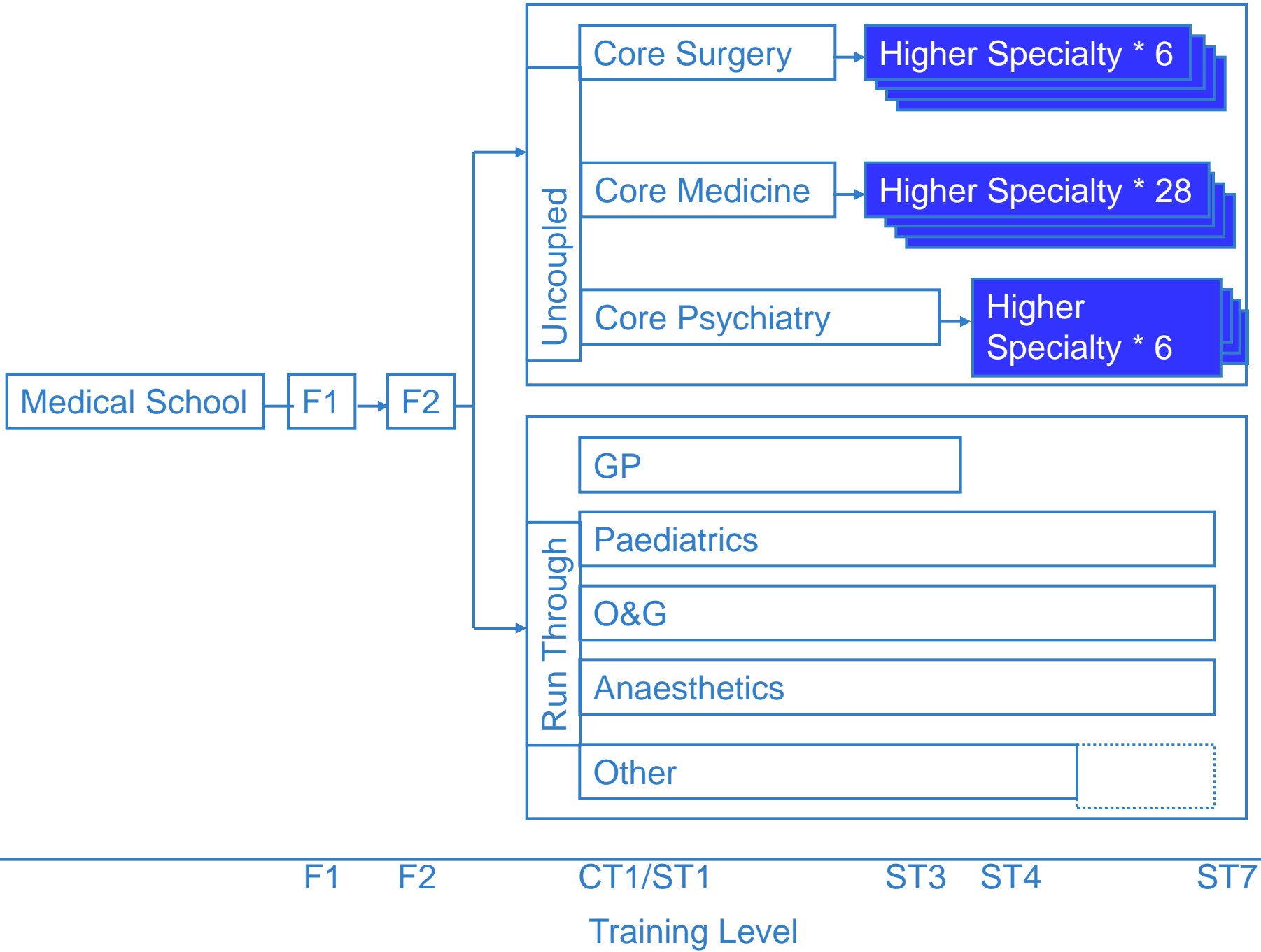
Programme Group	Trust / Board	Indicators												
		Overall Satisfaction	Clinical Supervision	Handover	Induction	Undermining	Adequate Experience	Work Load	Educational Supervision	Access to Educational Resources	Feedback	Local Teaching	Regional Teaching	Study Leave
CMT	St George's Healthcare NHS Trust													
CST	St George's Healthcare NHS Trust													
Emergency medicine	St George's Healthcare NHS Trust													
General surgery	St George's Healthcare NHS Trust													

[Print](#) - [Download](#)

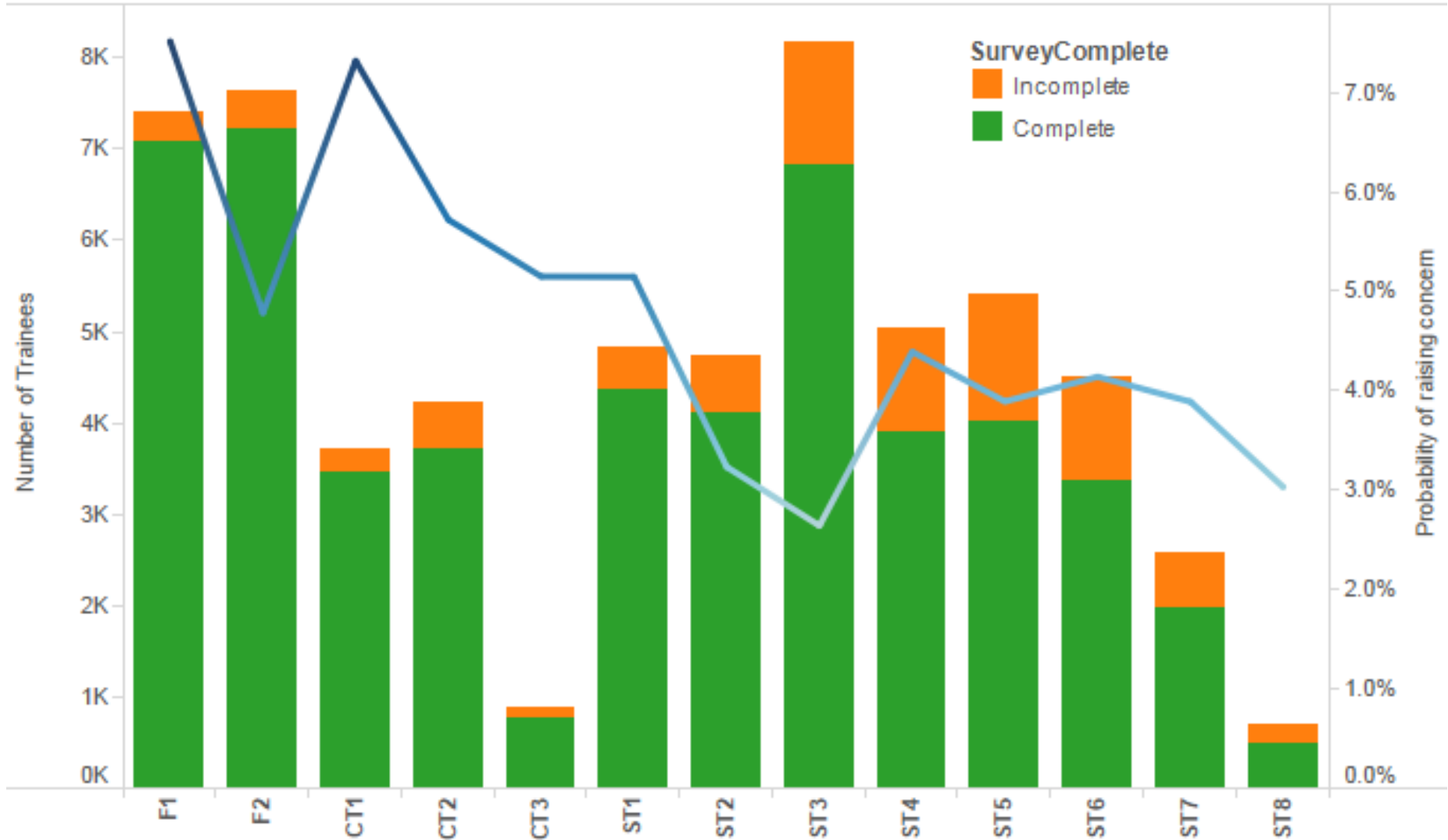
Workforce Element

- Have a 95% response rate from trainees and therefore have a near complete view of the medical pipeline





Survey Response Rates & Patient Safety Concerns



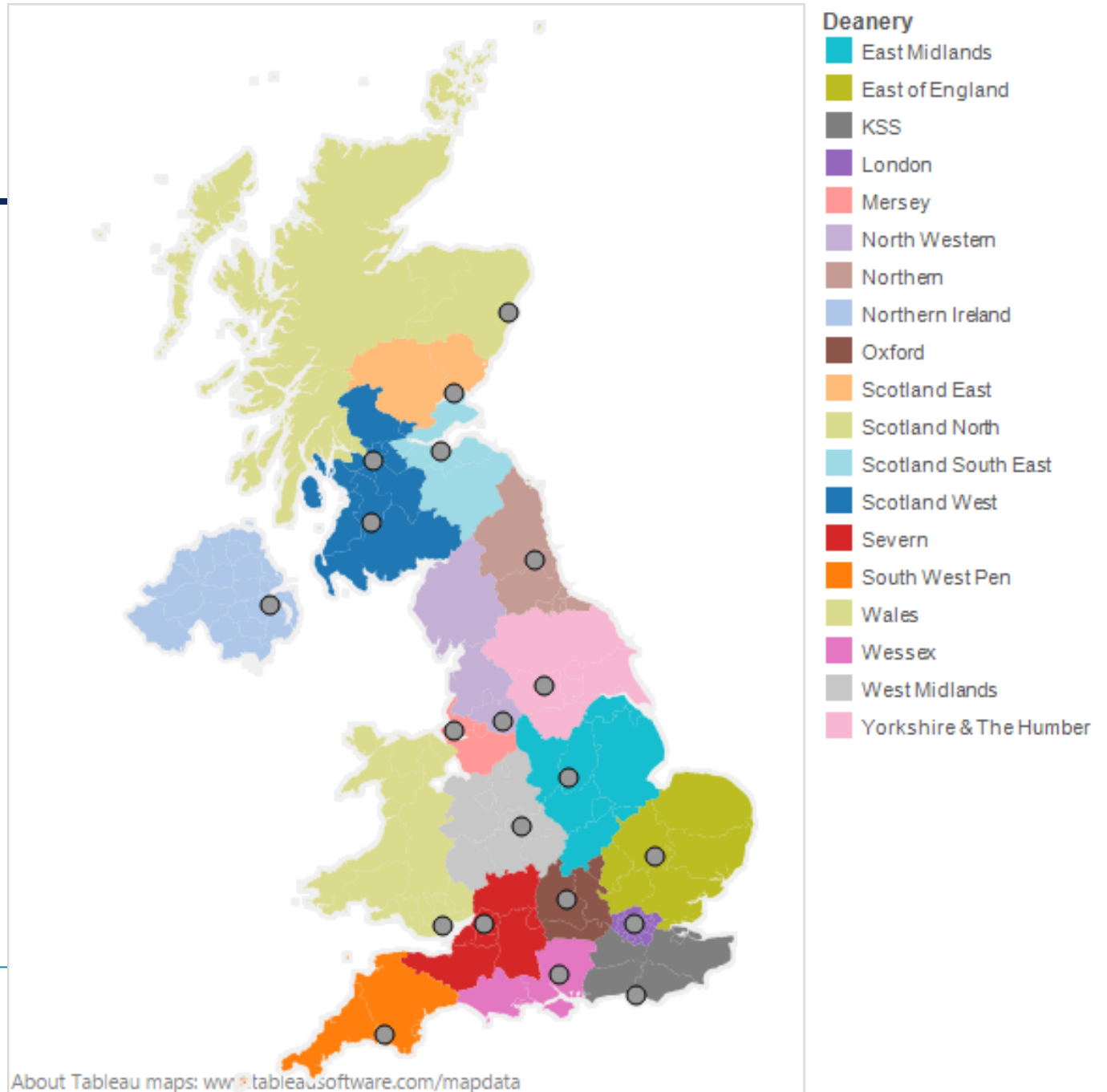
Numbers in training - Surgery

	CT1/ ST1	CT2/ ST2	ST3	ST4	ST5	ST6	ST7	ST8	Total
Core	795	813							
Cardio- Thoracic			58	29	15	10	7	5	124
General	2	10	337	280	237	235	206	137	1,444
OMFS			39	35	24	35	10		143
ENT			101	70	76	56	43	29	375
Paediatric	4	5	29	18	32	21	15	12	136
T&O	39	45	301	183	183	213	186	122	1,272
Urology			103	69	67	60	56		355
Total	841	875	1,052	727	704	701	588	328	5,816

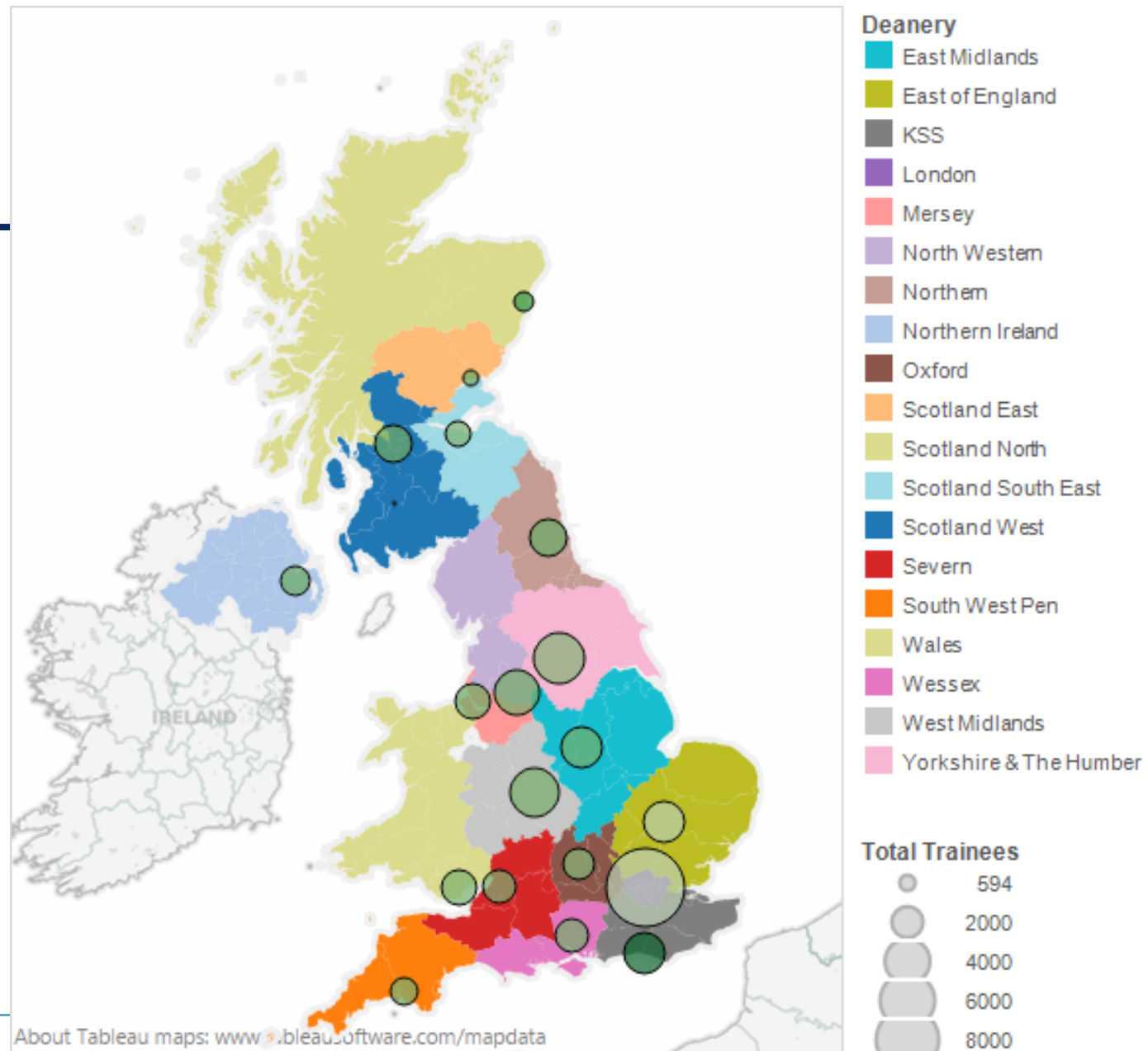
Validation

Initial Level	Final level													Grand Total
	CT1	CT2	CT3	F1	F2	ST1	ST2	ST3	ST4	ST5	ST6	ST7	ST8	
CT1	3389	146	3		1	5		2					2	3548
CT2	45	3522	51					10						3628
CT3	3	15	706					1	8					733
F1				7044	2									7046
F2				3	7148									7151
ST1	1		1			4264	120	46	15	2	1	1	2	4453
ST2		1				36	3922	134	29	16	6	3		4147
ST3						16	50	6418	585	162	71	28	9	7339
ST4	1	1	2			3	1	69	3073	642	154	64	8	4018
ST5						4		9	100	3046	608	185	50	4002
ST6						1		2	13	86	2430	362	57	2951
ST7									2	10	44	1303	67	1426
ST8												9	293	302
Total	3439	3685	763	7047	7151	4329	4093	6691	3825	3964	3314	1955	488	50744

Geography



Geography



Percentage that are Foundation Trainees

16.43%



50.62%

2013

- 2013 Survey closes on the 8th May
- Reporting will provide:
 - Longitudinal analysis 2012 against 2013
 - Aggregate analysis over 2012 & 2013

General
Medical
Council

Andy Knapton
QA Systems and Projects Manager
Education Directorate
General Medical Council
T: 020 7189 5366
E: aknapton@gmc-uk.org